

HYDRAULIC SWING DOCK LEVELER

Logidock SLR Hydraulic Dock Leveler with hinged swing lips provide the best in-class solution to facilitate smooth and efficient transfer of goods in your loading dock. The SLR Hydraulic series has been designed to accommodate various loading conditions found in the loading area, such as trucks of different sizes and heights, canted or uneven truck beds, heavy loading conditions as well as temperature controlled warehouses where special considerations are required to ensure efficient loading and unloading process.

A high manufacturing standard conforming to international loading dock guidelines with various built-in safety features ensures this dock leveler is able to tackle any kinds of loading conditions with ease and efficiency.

The SLR series are available in two common international Loading Dock Standards :

- **European Norm or British standard BS-EN 1398** (dimensions are in Metric with standard 2000 mmW decks)
- **North American ANSI MH 30.1** (dimensions are in Imperial units)



Load Capacity :

- 13,600 kg and 22,000 kg (Dynamic Test Load) accdg to ANSI-MH 30.1; or
- 6,000 kg and 9,000 kg (Dynamic Test Load) accdg to BS-EN 1398

Working Range :

- 350 mm above dock
- 300 mm below dock

Hydraulic Powerpack and Cylinders :

- Argos-Hytos (Germany) or equivalent
- Motor Power 0.75 kW
- 1 x main deck cylinder and 1 x lip cylinder

Control Unit :

- Control box with single pushbutton and Emergency Stop

Power Supply Options :

- 1ph/220-240V/50Hz
- 3ph/380-415V/50Hz
- 3ph/460V/60Hz
- And others (upon request)

Operating Temperature

-20 C to +50 C

Colour

Dark Blue or Matt Gray as standard

Technical Construction Features that makes our Logidock SLR dock levelers superior:

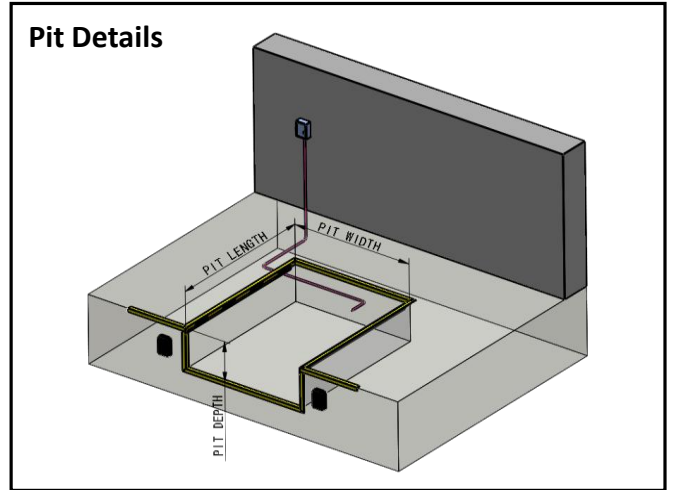
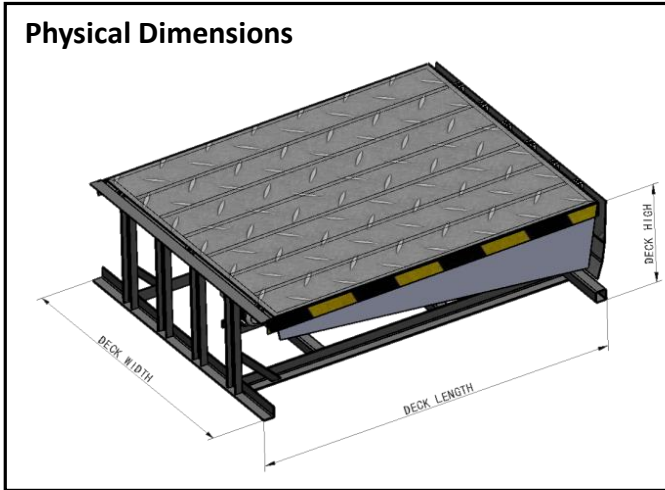


- **Structural Underdeck Construction** : Main deck is supported by 8 or 10 nos (for wider width decks) rectangular beam profiles spaced evenly to ensure even load distribution points across the deck while allowing the deck to be able to flex longitudinally to reduce deck structural stress, an important feature especially when handling trucks with uneven bed level. This allows allows better load carrying ability and torsional resistance and reduce the stress and metal fatigue which can lead to premature failure.
- **Lip Hinge** : Our heavy-duty hinge extends up to 100 mm beneath the lip, nearly three times further than the lip tube of typical tubular hinge and offering 300% more lip support, ensuring the lip is supported at its most stressed point during the constant rolling of material handling trucks. The lug design also offers torsional resistance as it connects with the deck and trailer bed. The lug hinge also allows for a smoother lip action and quieter operation with less wear on all moving parts, and easier to clean and maintain.
- **Hydraulic System** : A set of high quality hydraulic components consisting of a main cylinder, a lip cylinder and a high performance powerpack to raise and lower the deck and lip efficiently. The hydraulic system is built with Anti-Fall safety feature, preventing the deck from crashing down should it be loaded whenever the lip is not on the truck bed.
- **Angled Lip Design** : Our angled lip design ensures smooth transition between the dock and trailer bed, ensuring that the lip edges are resting on the truck bed fully even at various truck bed heights. The lip edges are also chamfered for a smooth roll on and off, preventing tyre chunking and damage of the material handling trucks.
- **Full range toeguards, deck strut stand and moulded rubber bumpers** are supplied as standard to ensure all round safety and protection.

Optional Accessories

- Weatherseal brush helps maintain cleanliness under the pit
- Deck edge and Underdeck seals reduce cold air loss in temperature control warehouses
- 3-lip design allows dock leveler to cater to smaller truck beds

Models and Dimensions



SLR-EN Series (conforming to BS-EN 1398 standards)

| Model | Capacities (Dynamic Loading accdg to EN 1398) | | DOCK LEVELER DIMENSIONS (MM) | | | | | PIT DIMENSIONS (MM) | | | |
|-------------|---|--------|------------------------------|--------|--------|---------------|-----------------|---------------------|--------|-------|------|
| | STUDIO | PREMIO | DECK | | | LIP LENGTH | O/ALL LENGTH | WIDTH | LENGTH | DEPTH | |
| | | | WIDTH | LENGTH | HEIGHT | | | | | FRONT | REAR |
| SLR-EN 2020 | 6.0 T | 9.0 T | 2000 | 2030 | 550 | 430 | 2460 | 2030 | 2030 | 570 | 560 |
| SLR-EN 2022 | 6.0 T | 9.0 T | 2000 | 2210 | 550 | 430 | 2640 | 2030 | 2210 | 570 | 560 |
| SLR-EN 2025 | 6.0 T | 9.0 T | 2000 | 2500 | 550 | 430 | 2930 | 2030 | 2500 | 570 | 560 |
| SLR-EN 2030 | 6.0 T | 9.0 T | 2000 | 3000 | 550 | 430 | 3430 | 2030 | 3000 | 570 | 560 |

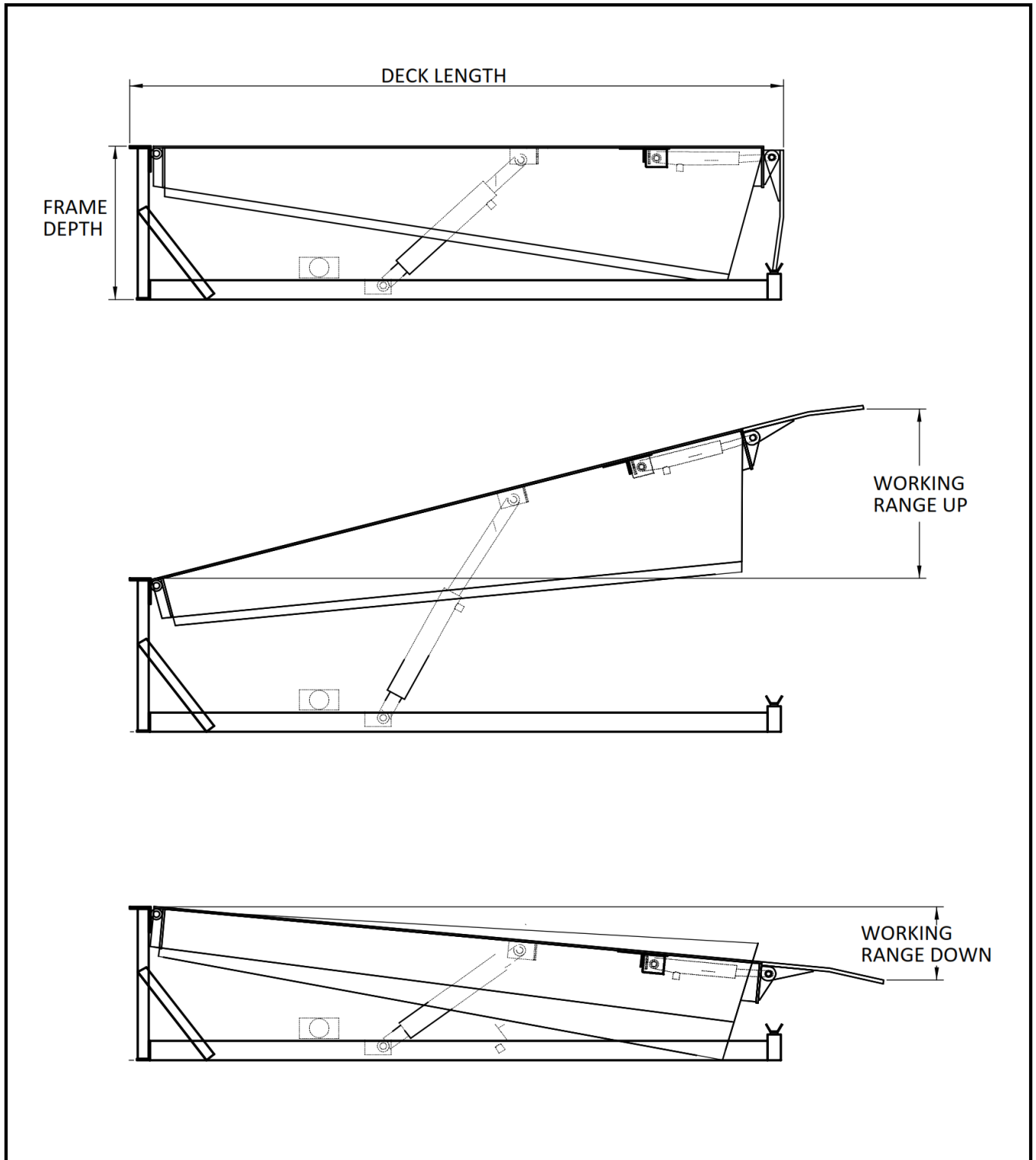
Other dimensions can be custom manufactured on request

SLR-MH Series (conforming to ANSI MH 30.1 standards)

| Model | Capacities (Dynamic Loading accdg to MH 30.1) | | DOCK LEVELER DIMENSIONS (MM) | | | | | PIT DIMENSIONS (MM) | | | |
|----------------|---|--------|------------------------------|--------|--------|---------------|-----------------|---------------------|--------|-------|------|
| | STUDIO | PREMIO | DECK | | | LIP LENGTH | O/ALL LENGTH | WIDTH | LENGTH | DEPTH | |
| | | | WIDTH | LENGTH | HEIGHT | | | | | FRONT | REAR |
| SLR-MH 6 X 8 | 13.6 T | 22.0 T | 1830 | 2210 | 490 | 430 | 2,640 | 1870 | 2210 | 500 | 490 |
| SLR-MH 6 X 10 | 13.6 T | 22.0 T | 1830 | 2820 | 490 | 430 | 3,250 | 1870 | 2820 | 500 | 490 |
| SLR-MH 6 X 12 | 13.6 T | 22.0 T | 1830 | 3500 | 490 | 430 | 3,930 | 1870 | 3500 | 500 | 490 |
| SLR-MH 66 X 8 | 13.6 T | 22.0 T | 1980 | 2210 | 490 | 430 | 2,640 | 2020 | 2210 | 500 | 490 |
| SLR-MH 66 X 10 | 13.6 T | 22.0 T | 1980 | 2820 | 490 | 430 | 3,250 | 2020 | 2820 | 500 | 490 |
| SLR-MH 66 X 12 | 13.6 T | 22.0 T | 1980 | 3500 | 490 | 430 | 3,930 | 2020 | 3500 | 500 | 490 |
| SLR-MH 7 X 8 | 13.6 T | 22.0 T | 2130 | 2210 | 490 | 430 | 2,640 | 2170 | 2210 | 500 | 490 |
| SLR-MH 7 X 10 | 13.6 T | 22.0 T | 2130 | 2820 | 490 | 430 | 3,250 | 2170 | 2820 | 500 | 490 |
| SLR-MH 7 X 12 | 13.6 T | 22.0 T | 2130 | 3500 | 490 | 430 | 3,930 | 2170 | 3500 | 500 | 490 |

Other dimensions can be custom manufactured on request

Working Range

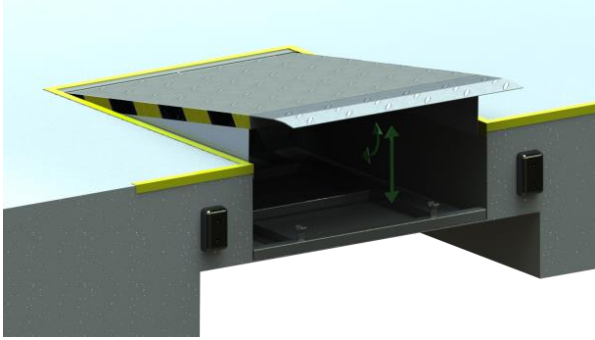


Notes:

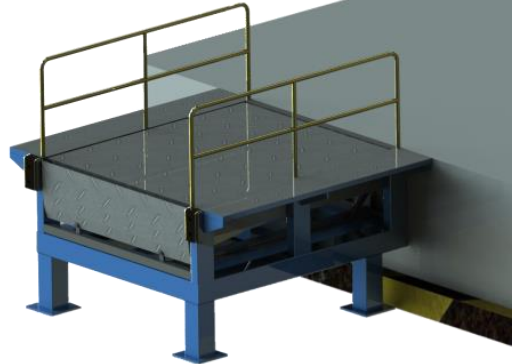
- Standard working range is +350mm(Up) / -300mm(Down)
- Working range can be customized to suit loading dock conditions and height, however may affect the performance and scalability of material handling trucks
- May also lead to premature wear and tear of dock leveler should deck inclinations be excessive

Installation Methods

Loading Dock Pit
(for standard warehouses with loading dock)



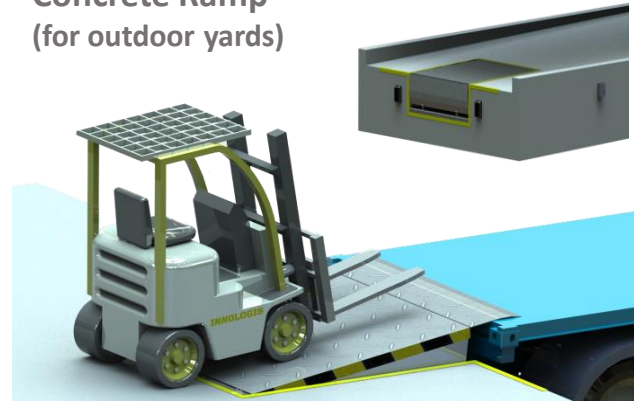
Frame Supported
(for docks without ready pit)



Loading Dock House
(for temperature controlled warehouses)



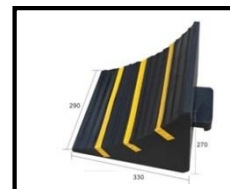
Concrete Ramp
(for outdoor yards)



Loading Dock Safety Accessories

For loading dock safety, we are able to offer a wide range of safety products and accessories to ensure a safe working place for your personnel while protecting your goods from accidental damage. Check out some of these products from our range:

- **Truck Restraints**
- **Truck Guides**
- **Wheel Chocks (In Steel or Moulded Rubber)**
- **Speed Bumps**
- **Moulded Rubber Bumpers**
- **Dock Traffic Light System**
- **LED Dock Lights**
- **Weatherseal Edge Strips**
- **And many more**



Other Types of Dock Leveler

Telescopic Dock Leveler SLR-TL

The perfect solution for precise lip positioning to truck beds as well as for cold store warehouses

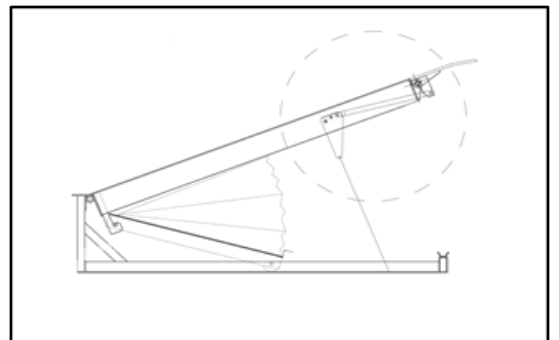
Logidock SLR-TL with Telescopic Lip series offers the most flexible solution to facilitate smooth and efficient transfer of goods in your loading dock. The telescopic lip is designed to extend from the main deck up to 1,000 mm length and be precisely positioned on the vehicle bed, especially for inaccurately docked vehicles OR for cold store warehouses where the truck needs to be parked further out from the dock edge due to dock seals or doors. It can accommodate various loading conditions found in the loading area, such as refrigerated trucks of different sizes and heights, heavy loading conditions as well as temperature controlled warehouses where special considerations are required to ensure efficient loading and unloading process.



Air Powered Dock Leveler SLR-AB

The perfect solution for ultra-clean warehouses with indoor docks

Logidock SLR-AB Airbag Dock Leveler uses air-powered airbag to raise and lower the deck and offers simplicity for your warehouse operations. A high volume, low-pressure blower pump inflates the air bladder while a mechanical linkage extends the lip outwards. Using air as the working fluid eliminates messy hydraulic fluids and avoids issues with leaky seals and connections, especially in ultra-clean or warehouses with indoor docks where oil contamination cannot be tolerated.



Check with us for dimensions and specifications of both SLR-TL and SLR-AB series dock levelers.